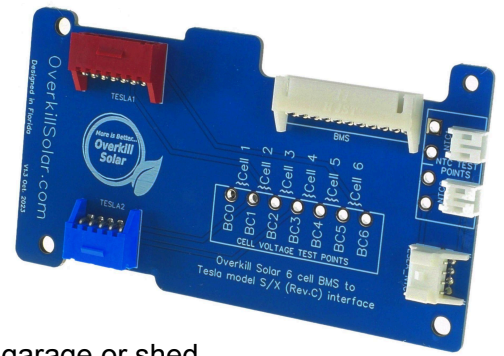




Tesla Rev. C Instructions

Pathfinder BMS 6s Kit



Warnings

Recycled Lithium-Ion battery modules should be installed in a detached garage or shed. Avoid installing these batteries in a dwelling area.

Lithium Ion cells have a high risk of fire which releases toxic fumes. Physical damage, heating, and overcharging can cause a runaway reaction and a fire that's impossible to extinguish.

Used, recovered, recycled, or salvaged battery modules may have hidden damage that makes them more sensitive to further damage.

A single 24v tesla module is unlikely to cause electric shocks, however, voltage over 48v can cause serious electric shocks. Take appropriate steps to avoid electric shocks if you plan to connect battery modules in series.

Step 1: Remove Tesla BMS board

- Remove the clear plastic covers from your Tesla module.
- The bus plates are always live, keep metal tools away!
- Support the module with a block of wood or foam, leave room to work on the board.
- Carefully pry the ribbon connectors straight out of their housings. The ribbon cables are fragile!
- Remove the 4 black plastic retainer pins. Pull each center pin first to release the outer pin.
- Unplug the temperature sensor connector. It has a small release lever.

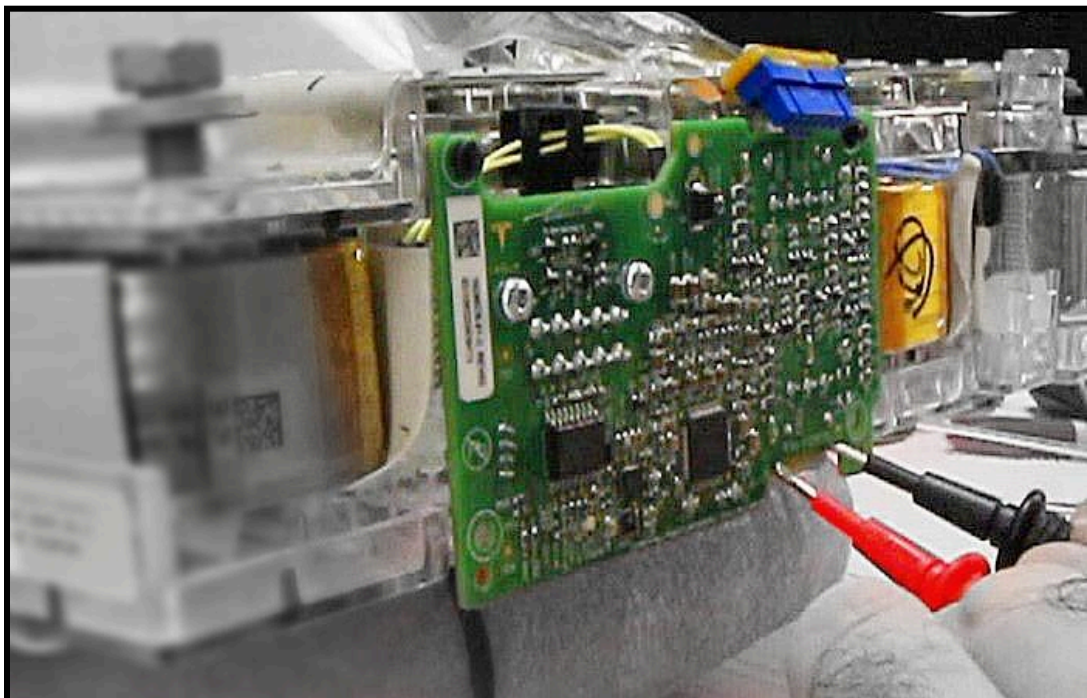


Fig. 1: Using multimeter probes as a tool to pry the ribbon connectors out of the old board.

Step 2: Install the New Interface Board

- Plug in the Tesla temperature sensor connector and the 2 black 2-pin cables.
- Carefully position the new board while moving the ribbon connectors out of the way.
- Attach the new board to the battery with the screws provided in the kit.
- Plug in both ribbon connectors. Push them straight into the connector housings.
- Use your multimeter to measure each cell voltage & confirm the health of the cells.

Step 3: Install your BMS

- Connect the battery module's positive terminal to the BMS's +Cell terminal
- Plug in the 11-pin cable to the interface board on one end, and to the BMS on the other end.
- Plug in the 2 2-pin temperature sensor wires to the BMS.
- Mount the BMS as desired.

IMPORTANT:

- Only your BMS's +Cell wire will connect to the battery's positive terminal!
- Connecting anything else to the positive terminal of your battery module may bypass the BMS protection and increase the risk of fire. Your electrical system's positive wire/buss can be connected to the BMS's B+ main terminal. The battery module's negative terminal can be connected to a common ground.

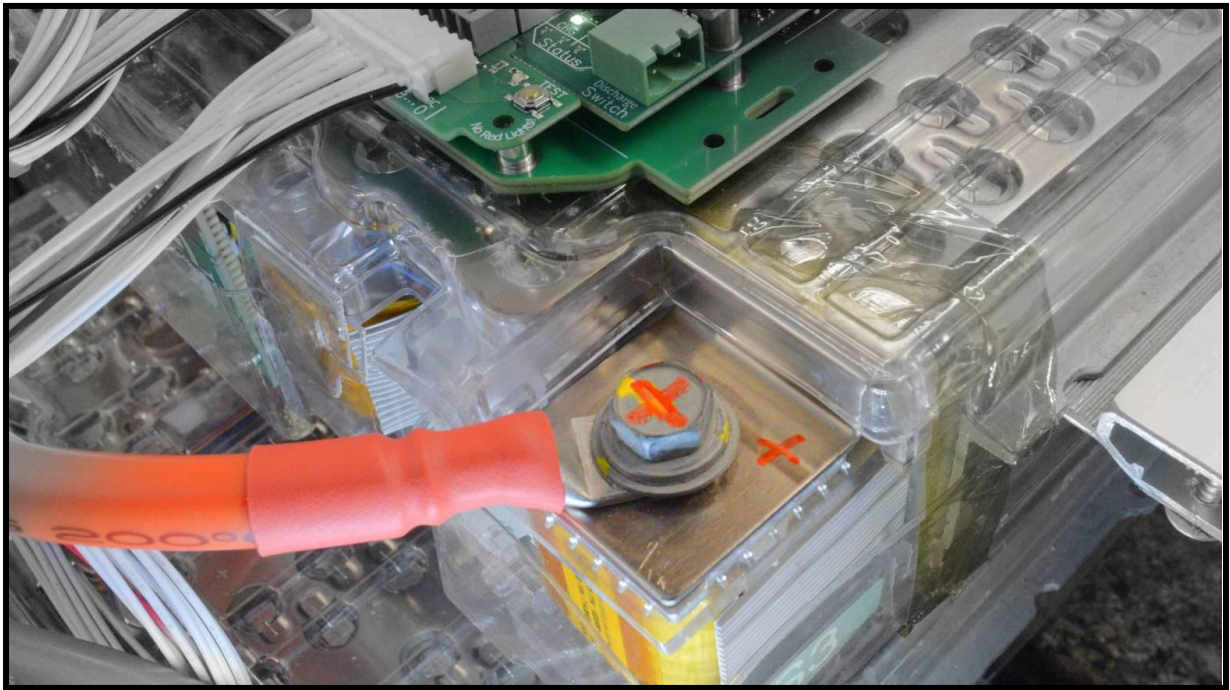


Fig. 2: Only connect the BMS's +Cell wire to this terminal, nothing else.

Email: Support@OverkillSolar.com

Is it Revision A, B, or C?

If you end up with a different battery that doesn't match your BMS kit, contact us and we will exchange the adapter board.

Rev. A

Rev. B

